



BN PRODUCTS-USA, LLC.

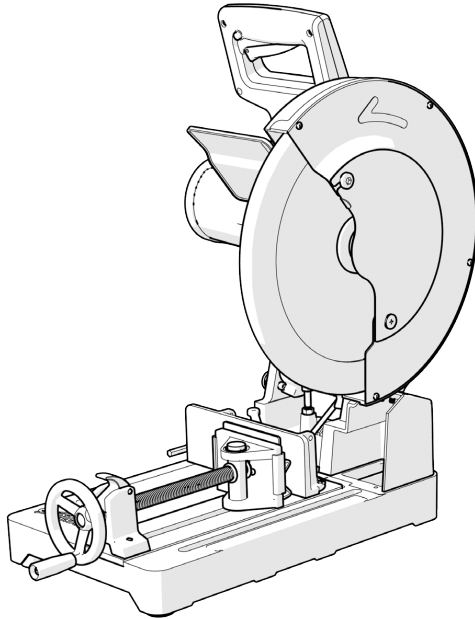
A Division of Benner-Nawman, Inc.

www.bnproducts.com

MODEL BNCE-130

THE **CUTTING EDGE SAW**[™]
BNCE SERIES

OPERATOR MANUAL



3450 N SABIN BROWN ROAD • WICKENBURG, AZ 85390

(800) 992-3833 • MAIL@BNPRODUCTS.COM

thank you

Thank you for choosing our BNCE-130 Cutting Edge Saw™. This manual covers the proper operation and maintenance. Before operating, please read this manual carefully for important procedures and safety. All technical data and drawings in this manual are consistent with the information on this product. However, as a result of revisions and other ongoing updates, the contents of this manual may be slightly different from the actual product. BN Products reserves the right to make changes at any time, without notice and without incurring any obligation; please understand. The copyright of this instruction manual belongs to us. Therefore, no reproduction is allowed without the written consent of BN Products-USA. All rights reserved. This manual is a permanent part of this product and should accompany the Cut-off Saw if it is resold.

Contents

IMPORTANT	3
WARRANTY	3
HANDLING	3
WORK SURFACE	3
LABELS & SYMBOLS	3
INTENDED USE OF THIS POWER TOOL	3
PROHIBITED USE OF THIS POWER TOOL	3
ELECTRICAL SAFETY	4
OUTDOOR USE	4
POWER TOOL GENERAL SAFETY INSTRUCTIONS	4
HEALTH ADVICE	6
ADDITIONAL SAFETY INSTRUCTIONS	7
GETTING STARTED - UNPACKING	7
MACHINE OVERVIEW	8
INSTALLING OR REMOVING A BLADE	9
CUTTING HEAD TRAVEL	10
CUTTING ANGLE ADJUSTMENT	11
REPOSITIONING THE REAR VISE JAW	11
QUICK VISE ADJUSTMENT MECHANISM	12
PREPARING TO MAKE A CUT	12
THE ON/OFF TRIGGER SWITCH	13
MAKING A CUT	13
MAINTENANCE	14
CHIP COLLECTION TRAY	14
TRANSPORTATION/STORAGE	15
ENVIRONMENTAL PROTECTION	15

IMPORTANT

Please read these operating and safety instructions carefully and thoroughly. For your safety, if you are uncertain about any aspect of using this equipment, please access the relevant technical helpline, (800) 992-3833 or www.bnproducts.com.

WARRANTY

BN Products-USA warrants this tool to the original purchaser, to be free of defects in materials and workmanship under normal and appropriate use and servicing for the period of one year from the date of purchase.

HANDLING

Handle the machine with care, allowing the machine to do the work. Avoid using excessive physical effort on any of the machine's controls. Consider your security, tool stability, and the machine's orientation during use.

WORK SURFACE

Consider the work surface material; its condition, density, strength, rigidity, and orientation.

LABELS & SYMBOLS

WARNING: Do not operate this machine if warning and instruction labels are missing or damaged.

Note: Warning labels or symbols may appear in the manual or placed directly on the product.

INTENDED USE OF THIS POWER TOOL

WARNING: This product is a hand-operated chop saw and has been designed to be used with high-quality blades. Only use accessories intended for use with this machine; recommended by BN Products-USA™.

When fitted with an appropriate blade, this machine can be used to cut: Mild Steel, Aluminium, Wood, 302, 303 & 304 Grade Stainless Steel Only.

Note: Cutting galvanized steel may reduce blade life.

PROHIBITED USE OF THIS POWER TOOL

WARNING: This product is a hand-operated chop saw and must only be used as such. It must not be modified in any way or used to power equipment or drive accessories other than those mentioned in this instruction Manual.

WARNING: This machine is not intended for use by persons (including children) with reduced physical, sensory or mental capabilities or lack of experience and knowledge with this tool. Children should not have access to this tool and should not be allowed to play near this machine.

ELECTRICAL SAFETY

This machine is fitted with the correct molded plug and lead for this designated market. If the electrical cord is damaged, it must be replaced.

OUTDOOR USE

WARNING: For your protection, if this tool is to be used outdoors, it should not be exposed to rain or used in a damp location. Do not place the tool on wet surfaces. Instead, use a clean, dry workbench if available. If an extension cable is required, it must be suitable for use outdoors and so labeled. In addition, the manufacturer's instructions should be followed when using any extension cable.

POWER TOOL GENERAL SAFETY INSTRUCTIONS

WARNING: Read all safety warnings and instructions. Failure to follow the warnings and instructions may result in electric shock, fire, or severe injury. Save all warnings and instructions for future reference. The term "power tool" in the warning information refers to your corded power tool or battery-operated (cordless) power tool.

General Power Tool Safety Warnings [Work area safety]

Keep the work area clean and well-lit. Cluttered or dark areas invite accidents. Do not operate power tools in explosive atmospheres, such as in the presence of flammable liquids, gases, or dust. Power tools create sparks that may ignite dust or fumes. Keep children and bystanders away while operating any power tool. Distractions can cause you to lose control.

General Power Tool Safety Warnings [Electrical Safety]

Power tool plugs must match the outlet. Never modify the plug in any way. For example, do not use any adapter plugs with earthed (grounded) power tools. Unmodified plugs and matching outlets will reduce the risk of electric shock. Avoid body contact with earthed or grounded surfaces, such as pipes, radiators, ranges, and refrigerators. There is an increased risk of electric shock if your body is earthed or grounded.

Do not expose power tools to rain or wet conditions. Water entering a power tool will increase the risk of electric shock.

Do not abuse the cord. Never use the cord for carrying, pulling, or unplugging the power tool. Keep the cord away from heat, oil, sharp edges, or moving parts. Damaged or entangled cords increase the risk of electric shock.

When operating a power tool outdoors, only use an extension cord suitable for outdoor use.

General Power Tool Safety Warnings [Personal Safety].

Stay alert, watch what you are doing, and use common sense when operating a power tool. Do not use a power tool while you are tired or under the influence of drugs, alcohol, or medication. A moment of inattention while operating power tools may result in serious personal injury.

Use personal protective equipment. Always wear eye protection. Protective equipment such as dust masks, non-skid safety shoes, hard hat, and hearing protection used for appropriate conditions will reduce personal injuries.

Prevent unintentional starting. Ensure the switch is in the off-position before connecting to the power source or battery pack, picking up, or carrying the tool. Carrying power tools with your finger on the switch invites accidents.

Remove any adjusting key or wrench before turning the power tool on. A wrench or a key attached to a power tool's rotating part may result in personal injury. Do not overreach. Keep proper footing and balance at all times. This enables better control of the power tool in unexpected situations.

Dress appropriately. Do not wear loose clothing or jewelry. Keep your hair, clothing, and gloves away from moving parts. Loose clothes, jewelry, or long hair can be caught in moving parts.

If devices are provided for connecting dust extraction and collection facilities, ensure these are connected and properly used. The use of dust collection can reduce dust-related hazards.

General Power Tool Safety Warnings [Power tool use and care]:

Do not force the power tool. Instead, use the correct power tool for your application. The proper power tool will do the job better and safer at the designed rate. Do not use the power tool if the switch does not turn on or off. Any power tool that cannot be controlled with the switch is dangerous and must be repaired immediately.

Disconnect the power tool from the power source or battery pack from the power tool before making any adjustments, changing accessories, or storing power tools. Such preventative safety measures reduce the risk of starting the power tool accidentally. Store idle power tools out of the reach of children and do not allow persons unfamiliar with the power tool or these Instructions to operate the power tool. Power tools are dangerous in the hands of untrained users.

Maintain power tools. Check for misalignment or binding of moving parts, breakage of moving parts, and any other condition that may affect the power tools' operation. If damaged, have the power tool repaired before use. Poorly maintained power tools cause many accidents.

Keep cutting tools sharp and clean. Properly maintained cutting tools with sharp edges are less likely to bind and are easier to control.

Use the power tool, accessories and tool bits, etc., following these instructions, considering the working conditions and the work to be performed. Using the power tool for operations different from those intended could result in a hazardous situation.

General Power Tool Safety Warnings [Service]

Have your power tool serviced by a qualified repair person using only identical replacement parts. This will ensure that the safety of the power tool is maintained.

DUST AND AIRBORNE PARTICLES

WARNING: When using this machine, dust particles may be produced. In some instances, depending on the materials you are working with, this dust can be particularly harmful.

If you suspect that paint on the surface of the material you wish to cut contains lead, seek professional advice. Lead-based paints should only be removed by an experienced professional, and you should not attempt to remove it yourself. Once the dust has been deposited on surfaces, hand-to-mouth contact can result in the ingestion of lead. Exposure to even low levels of lead can cause irreversible brain and nervous system damage. Children are particularly vulnerable. You are advised to consider the risks associated with the materials you are working with and to reduce the risk of exposure. As some materials can produce dust that may be hazardous to your health, we recommend using an approved face mask with replaceable filters when using this machine.

You should always work in a well-ventilated area. Work with approved safety equipment, such as dust masks specially designed to filter microscopic particles.

WARNING: The operation of any power tool can result in foreign objects being thrown toward your eyes, which could result in severe eye damage. Before beginning power tool operation, wear safety goggles or safety glasses with a side shield or a full face shield where necessary.

ADDITIONAL SAFETY INSTRUCTIONS

DANGER: Keep hands away from the cutting area and the blade. Keep your second hand on the auxiliary handle or motor housing. If both hands are holding the saw, they cannot be cut by the blade.

Do not reach underneath the workpiece. The guard cannot protect you from the blade below the workpiece.

Hold power tool by insulating gripping surfaces when operating where the cutting tool may contact hidden wiring or its own cord. Contact with a “live” wire will also make exposed metal parts of the power tool “live” and shock the operator.

Always use blades with the correct size and shape (diamond versus round) of arbor holes. Blades that do not match the mounting hardware of the saw will run eccentrically, causing a loss of control.

Never use damaged or incorrect blade washers or bolts. The blade washers and bolts were specially designed for optimum performance and safety of operation of your saw.

Do not use High-Speed Steel (HSS) saw blades with this tool.

Inspect the machine and the blade before each use. Do not use deformed, cracked, worn, or otherwise damaged blades.

Never use the saw without the original guard protection system. Do not lock the moving guard in the open position. Instead, ensure that the guard operates freely without jamming.

Only use blades that comply with the characteristics specified in this manual. Before using accessories, always compare the maximum allowed RPM of the accessory with the machine’s RPM.

WARNING: If any parts are missing, do not operate your machine until the missing parts are replaced. Failure to follow this rule could result in serious personal injury.

GETTING STARTED - UNPACKING

Caution: This packaging contains sharp objects. Take care when unpacking. Remove the machine, together with the accessories supplied from the packaging. Check carefully to ensure the device is in good condition and account for all the accessories listed in this manual. Also, make sure that all the accessories are complete. If any parts are missing, the machine and its accessories should be returned to the retailer in their original packaging.

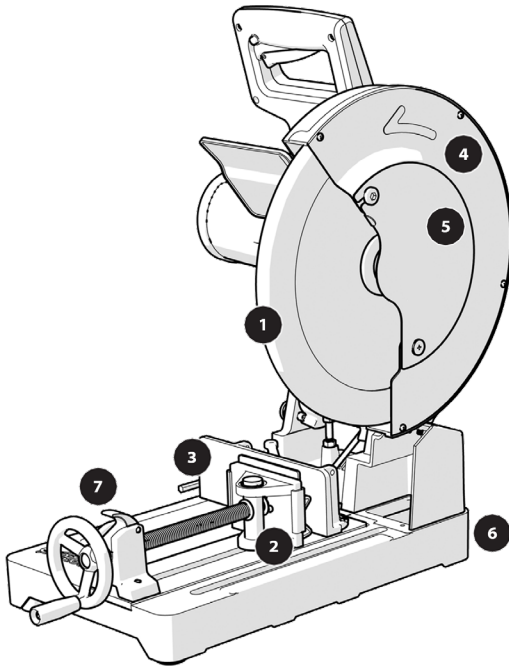
Please do not throw the packaging away; keep it safe throughout the guarantee period. Dispose of the packaging in an environmentally responsible manner. Recycle if possible.

Do not let children play with empty plastic bags due to the risk of suffocation.

MACHINE OVERVIEW

A parts diagram can be downloaded from:

<https://www.bnproducts.com/tools/bnce-130-chop-saw/>



1. Lower Blade Guard
2. Front Swivelling Vise Jaw
3. Repositionable Rear Vise Jaw
4. Upper Blade Guard
5. Arbor Guard
6. Chip Collection Tray
7. Quick Release 'Split Nut'

GETTING STARTED - PREPARATION RELEASING the CUTTING HEAD

The cutting head will automatically rise to the upper position once it is released from the locked down position.

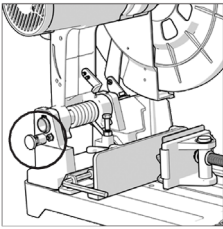


Fig. 1

To Release the cutting head from the Locked Down position -- Gently press down on the cutting handle. Pull out the head latching pin and lock it in the outer position. (Fig. 1) Allow the cutting head to rise to its upper position.

If release is difficult: gently rock the cutting head up and down. Pull the latching pin fully out and turn 1/4 of a turn to lock in the outer position.

Note: We recommend that when the machine is not in use, the cutting head is locked in its down position with the latching pin fully engaged in its socket.

INSTALLING OR REMOVING A BLADE

WARNING: Only use genuine BN blades or BN-approved blades designed for this machine. Ensure that the maximum recommended speed of the blade is compatible with the machine.

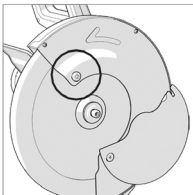


Fig. 2

WARNING: Only perform this operation with the machine disconnected from the power supply.

Note: We recommend wearing protective gloves when handling the blade during installation or when changing the machine's blade.

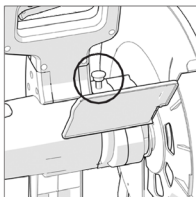


Fig. 3

Removing a Blade:

Ensure that the cutting head is in its upper position.

Loosen the fastener screw securing the arbor guard and rotate the guard upwards to reveal the machine's arbor. (Fig. 2) Engage the arbor lock by pressing the arbor lock button. (Fig. 3). Use the supplied hex key to loosen the arbor screw. (Fig. 4)

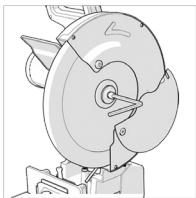


Fig. 4

Note: The arbor screw has a right-hand thread. Turn clockwise to tighten. Turn counterclockwise to loosen.

Remove the arbor screw, washer, and outer blade flange and store them safely for future installation.

Retract the lower blade guard into the upper blade guard by rotating it by hand. (Fig. 5)

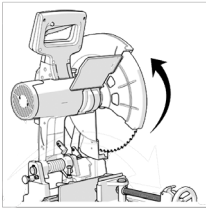


Fig. 5

Remove the blade, leaving the inner blade flange in its service position.

Installing a Blade:

Ensure that all components are free from dirt and debris.

Install the blade onto the inner blade flange and arbor, ensuring that the direction and rotation arrow on the blade matches the direction of arrow rotation found on the machine's upper blade guard. (Fig. 6)

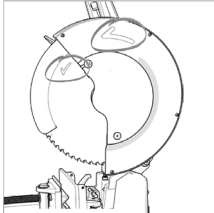


Fig. 6

Reinstall the outer blade flange, washer, and arbor screw.

Lock the arbor by pressing the arbor lock button.

Tighten the arbor screw using the 8mm hex key.

Return the arbor guard to its service position and tighten the crosshead screw.

Check that the arbor lock has been released by rotating the blade by hand. Ensure that the hex key is removed from the arbor screw and is safely stored for future use.

Check the installation, particularly the retractable lower blade guards, by lowering and raising the cutting head a few times.

WARNING: After installing a new blade, always run the machine, without load, for a couple of minutes. Stand away from the blade. The blade could shatter during this trial run if it contained an undetected flaw.

CUTTING HEAD TRAVEL

Cutting Head Downward Travel Adjustment

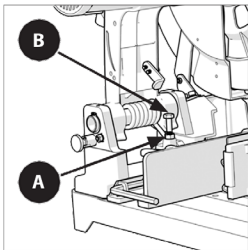


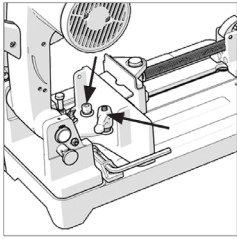
Fig. 7

The downward travel of the cutting head can be adjusted to prevent the blade from contacting any part of the machine's metal base.

Lower the cutting head and check for any blade contact with the machine's base.

If the downward travel of the cutting head needs to be adjusted:

Loosen the locknut on the downward travel stop screw. (Fig. 7a)



Turn the adjusting screw (Fig. 7b) out (counterclockwise) to decrease the downward travel of the cutting head.

Turn the adjusting screw in (clockwise) to increase the downward travel of the cutting head.

Tighten the adjustment screw locknut when satisfactory downward travel of the cutting head is achieved.

Fig. 8

CUTTING ANGLE ADJUSTMENT

Note: The rear vise jaw can be turned through 45 degrees.

The rear vise jaw is factory set at 0 degrees (at 90 degrees to the blade) so that the blade cuts squarely across the material positioned in the vise. For angled cuts, the rear vise jaw can be swung through (up to) 45 degrees, with a protractor scale included on the vise jaw for ease and accuracy of setting.

To angle the rear vise jaw -- Loosen the M10 socket-headed screw and the lever-handled locking screw. (Fig. 8). Turn the rear vise jaw to the required angle. Tighten the socket-headed screw using the supplied hex key and tighten the lever-handled locking screw.

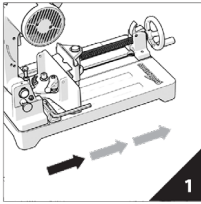
Note: The lever handle locking screw has a spring-loaded repositionable lever. Repositioning the lever may be necessary to ensure that the locking screw can be tightened sufficiently when the rear vise jaw is angled. To reposition the lever on the screw, pull the lever upwards and rotate the lever to a convenient position (one that allows the screw to be tightened); release the lever and tighten the screw. As a result, the front vise jaw will automatically compensate for any rear jaw angle or accommodate irregular-shaped workpieces.

REPOSITIONING THE REAR VISE JAW

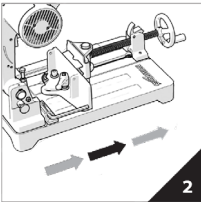
The rear vise jaw can be removed from the machine's base and repositioned. (Fig.9)

To reposition:

Remove the M10 socket-headed screw, the lever-handled locking screw, and all washers that secure the rear vise jaw to the machine's base. To remove the lever-handled locking screw, pull the lever upwards and hold it against the spring while unscrewing the locking screw from its service position using a flat-bladed screwdriver. Reposition the rear vise jaw; three (3) possible positions are available because of the six (6) threaded holes in the machine's base.

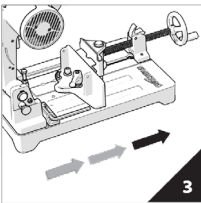


Replace the lever-handled locking screw and the socket-headed screw into their new service positions. Ensure that all standard and locking washers are correctly positioned. Repositioning the rear vise jaw to the rear-most position will enable wider pieces of material to be cut than is possible with the rear vise jaw in either of the more forward positions.



'V' Clamp Jaw (If supplied)

The 'V' Clamp Jaw slips over the moving front vise jaw. It should be used when cutting round material to provide greater clamping security. It should also be used to cut a square tube in a diamond position (Fig. 10).



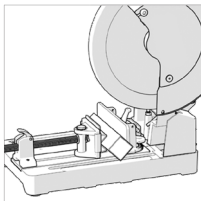
QUICK VISE ADJUSTMENT MECHANISM

The vise operating mechanism is equipped with a 'split nut' for speed and convenience. Using this enables rapid adjustment of the front vise jaw.

Lift the 'split nut'. (Fig. 11a)

Slide the front jaw to the required position.

Fig. 9



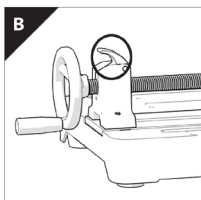
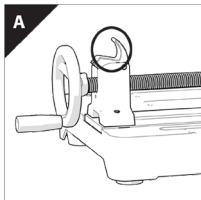
Return the 'split nut' to its service position. (Fig 11b)

WARNING: The 'split nut' must be returned to its service position and be fully engaged with the threads on the long vise screw.

Pulling back slightly on the vise handle just before the vise jaw contacts the workpiece will help the correct seating of the 'split nut'. Using this machine without the 'split nut' fully engaged with the vise screw threads is dangerous and must not be attempted.

Tighten the vise to secure the workpiece.

Check the security of the workpiece before attempting a cut.



PREPARING TO MAKE A CUT

Do not overreach. Keep sound footing and balance. Stand to one side so that your face and body are out of line of a possible kickback.

Fig. 11

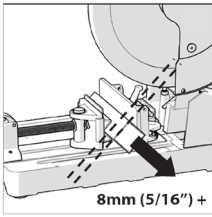


Fig. 12

Caution: The minimum cut-off piece must be 8mm (5/16") or greater in length to avoid the piece falling through the blade slot and causing any potential danger. (Fig 12)

WARNING: Freehand cutting is a significant cause of accidents and should not be attempted.

Ensure that the workpiece is firmly secured in the vise. The machine's base should be clean and free from swarves, sawdust, etc. before the workpiece is clamped into position.

Ensure that the 'cut-off' material is free to move sideways away from the blade when the cut is completed. In addition, ensure that the 'cut-off' piece cannot become 'jammed' in any other part of the machine.

Do not use this saw to cut small pieces. If the workpiece being cut will not safely fit into the clamp, it is too small to cut with this tool.

Angles should be clamped in an inverted position so that the point of the section is uppermost.

THE ON/OFF TRIGGER SWITCH

This machine is equipped with a safety start trigger switch.

To start the tool -- Push the safety lock button on the side of the handle with your thumb. Depress the main trigger switch to start the motor.

WARNING: Never start the saw with the cutting edge of the saw blade in contact with the workpiece surface.

MAKING A CUT

With the cutting head in the upper position, switch on the motor and allow it to reach full operational speed.

Gently lower the cutting head.

Introduce the blade into the material slowly, using light pressure first to keep the blade from grabbing.

Gradually increase the pressure as a blade enters the workpiece. Do not 'force' the machine. Let the saw blade do the work.

Note: Cutting performance will not improve by applying undue pressure on the machine, and doing so may cause blade and motor life to be reduced.

Reduce the pressure as the blade begins to exit the material.

On completion of a cut, allow the cutting head to return to its upper position and turn off the motor.

Only remove your hands, or the workpiece from the machine, after the motor has completely stopped and the lower blade guard covers the stationary blade.

MAINTENANCE

Note: Any maintenance must be carried out with the machine switched off and disconnected from the mains/battery power supply.

Check that all safety features and guards are operating correctly regularly. Only use this machine if all guards/safety features are fully operational.

All motor bearings in this machine are lubricated for life. No further lubrication is required.

Use a clean, slightly damp cloth to clean the plastic parts of the machine. Do not use solvents or similar products which could damage the plastic parts.

WARNING: Do not attempt to clean by inserting pointed objects through openings in the machine's casings etc. The machine's air vents should be cleaned using compressed dry air.

Excessive sparking may indicate the presence of dirt in the motor or worn-out carbon brushes.

If this is suspected, have the machine serviced and the brushes replaced by a qualified technician with BN-recommended brushes).

CHIP COLLECTION TRAY

The chip collection tray should be emptied at regular intervals. We recommend that for efficiency purposes, the tray be emptied when it is approximately 60% full.

To check the Chip Collection Tray:

Turn the locking lever to the horizontal position and withdraw the tray from the machine to check the contents. Empty the contents of the tray into a suitable recycling bin. It may be necessary to wear a dust mask when emptying the chip collection tray. Replace the chip collection tray and return the locking lever to the vertical position to secure the tray within the machine's base.

TRANSPORTATION/STORAGE

For ease and convenience, the cutting head can be held in the 'down' position when transporting or storing the machine.

To hold it in the down position, lower the cutting head to its lowest position. Rotate the cutting head locking pin 1/4 of a turn, and allow it to deploy to the "locked-down" position.

ENVIRONMENTAL PROTECTION

Waste electrical products should not be disposed of with household waste. Instead, please recycle where facilities exist. Check with your local authority or retailer for recycling advice.



REPLACEMENT BLADE:
RB-BNCE-130

