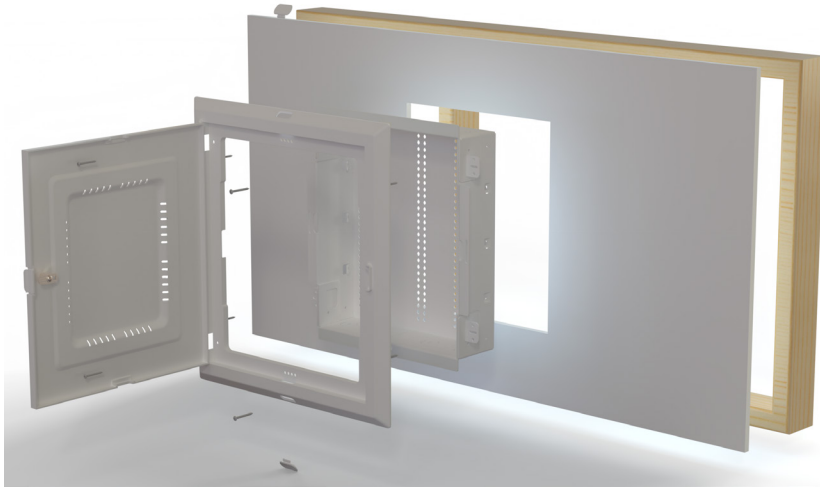




Structured Wiring Box Installation Instructions

Introducing the New 16-Inch "Flat" (Interior, Semi-Recessed) Service Box

The 14164F-MMH is our most compact Flat Box yet - designed in response to demand for a smaller, space-efficient enclosure that doesn't compromise on features. The 16" Flat Box offers enhanced usability and versatility for a wide range of installations.



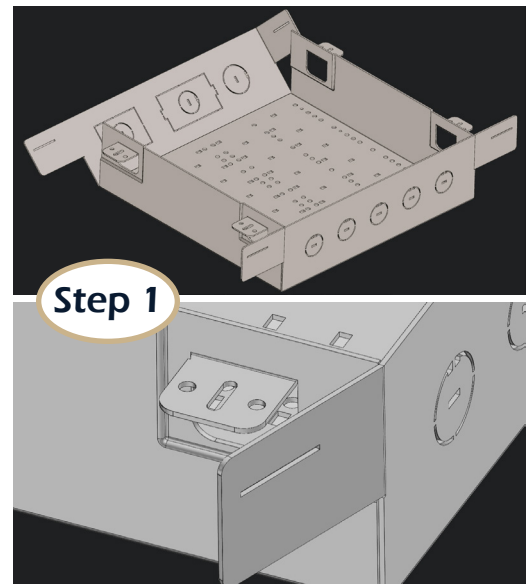
Features & Benefits :

- **Compact 16" height** - Ideal for tight spaces and retrofit projects
- **Integrated Cable Tie Tabs** (LH & RH) - Keep internal wiring clean and organized
- **Standard Lock Included** - Built-in for added security
- **Strategic Door Pass-Throughs** - Cat5/6 cable passthroughs that don't interfere with lid opening or closure
- **Rear Knockouts** - Pre-scored punchouts for rear access requirements
- **Reinforced Front Flanges** - Strengthen and help retain shape during and after installation
- **Optional Inside Screw Mounting** - For stud mounting in tight drywall locations

Get Started: Quick-Reference Installation

1. **Unpack the 14164F-MMH Package:** Separate the lid from the box compartment
 - A. Fold the box into shape, securing each corner with tabs provided

(Continued on Back)



2. Mounting the Box

- A. Use side tabs to secure body directly to wall studs
- B. Optional: Use side screw mounts for stud-to-stud inside mounting. If necessary, cut front tabs to create flush drywall clearance

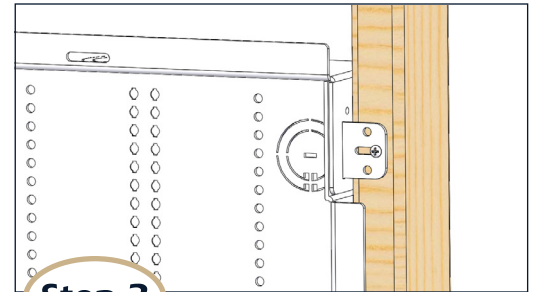
3. Install Drywall around the box

4. Install Front Cover and Lid

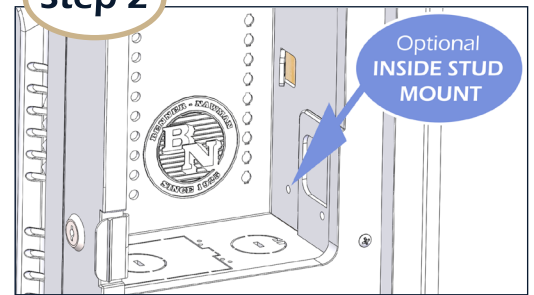
- A. Make sure the four (4) side flanges are sandwiched between the front cover and the drywall.
- B. Use four (4) screws to screw the front cover down. Make sure the screws extend through the drywall and reach the wall studs.
- C. Ensure the front cover is level.
- D. Note: The front cover can be installed to open to the Left or Right

Usage Tips

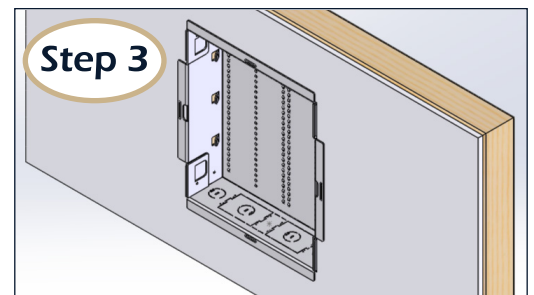
- **Routing Wires**
 - Use side tabs for cable ties and secure wiring inside cabinet to installed modules
 - For external cabling, feed through the pass-through openings (this will not interfere with lid closure)
- **Rear Access** (Optional)
 - Knockouts can be used when rear cable entry is required; score and remove as needed
- **Security**
 - A key-lock is pre-installed; set of two (2) keys are included with the box package



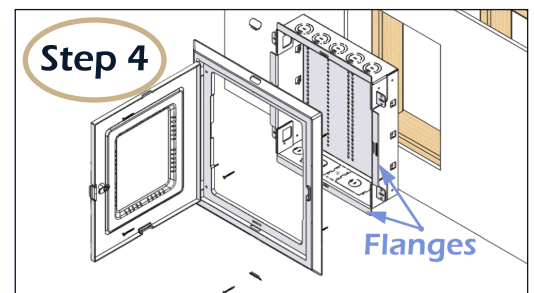
Step 2



Optional
INSIDE STUD
MOUNT

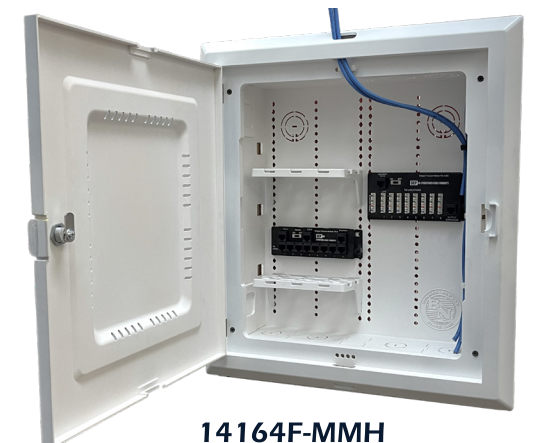


Step 3



Step 4

Flanges



14164F-MMH

Benner-Nawman



3450 N Sabin Brown Road
Wickenburg, AZ 85390

(800) 992-3833 | Benner-Nawman.com